



Panda SIEMFeeder

# Panda SIEMFeeder Infrastructure Guide

**Version:** 3.00.00-00

**Author:** Panda Security

**Date:** 01/02/2022



### **Legal notice.**

Neither the documents nor the programs that you may access may be copied, reproduced, translated or transferred to any electronic or readable media without prior written permission from Panda Security, Santiago de Compostela, 12, 48003 Bilbao (Bizkaia) SPAIN.

### **Registered trademarks.**

Windows Vista and the Windows logo are trademarks or registered trademarks of Microsoft Corporation in the United States and/or other countries. All other product names may be registered trademarks of their respective owners.

© Panda Security 2022. All rights reserved.

### **Contact information.**

Corporate Headquarters:

Panda Security  
Santiago de Compostela 12  
48003 Bilbao (Bizkaia) SPAIN.  
<https://www.pandasecurity.com/uk/about/contact/>



## About the Panda SIEMFeeder Infrastructure Guide

You can find the most recent version of this guide at:

<https://www.pandasecurity.com/rfiles/enterprise/solutions/adaptivedefense/SIEMFeeder-Manual-EN.PDF>

## Downloading the Panda Importer software

To get the Panda Importer installation package, refer to the following URL: <https://www.pandasecurity.com/en-us/support/card?id=950031>

## Panda SIEMFeeder events guide

<https://www.pandasecurity.com/rfiles/enterprise/solutions/adaptivedefense/SIEMFeederAD-EventDescriptionGuide-EN.pdf>

## Panda Adaptive Defense and Panda Adaptive Defense 360 on Aether guides

Administration guides for products on the Traditional Platform:

<https://www.pandasecurity.com/rfiles/enterprise/solutions/adaptivedefense/ADAPTIVEDEFENSE360-manual-EN.pdf>

<https://www.pandasecurity.com/rfiles/enterprise/solutions/adaptivedefense/ADAPTIVEDEFENSE-manual-EN.pdf>

Administration guides for products on Aether Platform:

<https://www.pandasecurity.com/rfiles/enterprise/solutions/adaptivedefense/latest/ADAPTIVEDEFENSE360oAP-guide-EN.pdf>

<https://www.pandasecurity.com/rfiles/enterprise/solutions/adaptivedefense/latest/ADAPTIVEDEFENSEoAP-guide-EN.pdf>

## Technical information about the modules and services compatible with Panda SIEMFeeder

To access the Advanced Reporting Tools User's Guide, go to the following URL:

<https://www.pandasecurity.com/rfiles/enterprise/solutions/adaptivedefense/ADVANCEDREPORTINGTOOL-AETHER-Guide-EN.pdf>

<http://www.pandasecurity.com/rfiles/enterprise/solutions/adaptivedefense/ADVANCEDREPORTINGTOOL-Guide-EN.pdf>

## Panda Partner Center Guide

- You can find the most recent version of this guide at:

<http://documents.managedprotection.pandasecurity.com/AdvancedGuide/PARTNERCENTER-Manual-EN.pdf>

- For more information about a specific topic, please refer to the product's online help, available at:

<http://documents.managedprotection.pandasecurity.com/Help/v77000//Partners/en-us/index.htm>

## Technical Support

Panda Security provides global support services aimed at responding to specific questions regarding the operation of the company's products. The technical support team also generates documentation covering technical aspects of our products. This documentation is available in the eKnowledge Base portal.

- To access specific information about the product, please go to the following URL:

<https://www.pandasecurity.com/en/support/siemfeeder/>

## Survey on the Panda SIEMFeeder Infrastructure Guide

Rate this guide and send us suggestions and requests for future versions of our documentation:

<https://es.surveymonkey.com/r/feedbackSIEMFeederInfManEN>

# Table of contents

Chapter 1: Preface .....	7
Icons .....	8
Chapter 2: Panda SIEMFeeder architecture .....	9
Main objectives of the Panda SIEMFeeder service .....	9
Main benefits of the Panda SIEMFeeder service .....	11
General architecture .....	11
Chapter 3: Panda SIEMFeeder for Partners architecture .....	15
Aims of the Panda SIEMFeeder for Partners service .....	15
Benefits of the Panda SIEMFeeder for Partners service .....	17
General architecture .....	18
General functions of the service provider .....	19
Chapter 4: Deployment and integration requirements .....	21
Licenses and required information .....	21
Deployment and integration requirements .....	22
Data leverage requirements .....	24
Sizing recommendations for the Panda Importer computer .....	25
Service availability .....	26
Chapter 5: Installing and configuring Panda Importer on Windows systems .....	29
Installation requirements .....	30
Installation and configuration .....	31
Configuration .....	32
Configuring multiple instances .....	33
Configuring log storage and forwarding .....	35
Copying downloaded logs to multiple locations .....	36
Running and stopping the program .....	37
Changing the settings .....	38
Manually editing the Panda Importer settings .....	38
Chapter 6: Installing and configuring Panda Importer on Linux systems .....	41
Installation requirements .....	42
Installation and configuration .....	43
Configuration .....	44
Configuring Panda Importer as a daemon .....	45
Configuring multiple instances .....	46
Configuring log storage and forwarding .....	46
Copying downloaded logs to multiple locations .....	48
Running and stopping the program .....	49
Changing the settings .....	50
Manually editing the Panda Importer settings .....	50
Chapter 7: Appendix 1: Troubleshooting .....	53
Chapter 8: Appendix 2: Security Architecture .....	55
AAA security architecture overview .....	56
Security architecture: Components .....	56
Initial message exchange .....	57

Subsequent message exchange .....58  
Communication characteristics .....58



# Chapter 1

# Preface

This guide provides the information and procedures necessary for the implementation of the Panda SIEMFeeder and Panda SIEMFeeder for Partners services.

## CHAPTER CONTENTS

Intended audience .....	7
Compatible security products .....	7
Document structure .....	8
<b>Icons - - - - -</b>	<b>8</b>

### Intended audience

This document is intended for:

- The technical staff responsible for managing the IT systems of companies that purchased the Panda Security Panda SIEMFeeder service.
- The technical staff of the managed security service provider (MSSP) that purchased the Panda Security Panda SIEMFeeder for Partners service.

### Compatible security products

Panda SIEMFeeder and Panda SIEMFeeder for Partners require that one of the following products be installed on protected computers:

- Panda Adaptive Defense on Aether (compatible with Panda SIEMFeeder and Panda SIEMFeeder for Partners)
- Panda Adaptive Defense 360 on Aether (compatible with Panda SIEMFeeder and Panda SIEMFeeder for Partners)
- Panda Adaptive Defense Traditional (compatible with Panda SIEMFeeder)
- Panda Adaptive Defense 360 Traditional (compatible with Panda SIEMFeeder)

The procedures and instructions in this guide apply equally to all of the aforementioned products. Also, the term “Panda Adaptive Defense” is used generically to refer to all of them, as there is no difference among them with regard to the service.

## Document structure

The information in this guide is divided into three sections, each of which is intended for different areas/technical profiles within the IT department of a company or MSSP:

- **Architecture information** (chapters 2 and 3): intended for systems architects who need to have global visibility into the service to assess the impact of any changes made to the organization's IT infrastructure and generate management and recovery procedures.
- **Service requirements information** (chapter 4): intended for system administrators who need to provision the resources needed for the service to work correctly.
- **Service deployment information** (chapters 5 and 6): intended for IT security specialists who configure the network access required to enable integration of the service into the company's or the MSSP's SIEM server.

## Icons

The following icons are used in this guide:



Explanations and additional information, such as an alternate method for performing a certain task.



Suggestions and recommendations.



Important advice regarding the correct use of options available in Panda SIEMFeeder or Panda SIEMFeeder for Partners.



Refer to other chapters or sections in the guide for more information.

# Chapter 2

## Panda SIEMFeeder architecture

Panda SIEMFeeder is Panda Security's service for delivering the information and knowledge generated by the Panda Adaptive Defense products to end customers' SIEM platforms. Panda SIEMFeeder helps administrators uncover unknown threats, targeted attacks, and advanced malware (APT, Advanced Persistent Threats), providing deeper visibility into the activity of the processes run across organizations' IT structures.



For more information about the equivalent solution to Panda SIEMFeeder for security service providers, Panda SIEMFeeder for Partners, refer to "[Panda SIEMFeeder for Partners architecture](#)" on page 15.

### CHAPTER CONTENTS

<b>Main objectives of the Panda SIEMFeeder service</b> .....	<b>9</b>
Enriching the monitored activity .....	10
<b>Main benefits of the Panda SIEMFeeder service</b> .....	<b>11</b>
<b>General architecture</b> .....	<b>11</b>
Benefits of the Azure infrastructure .....	12
Information flow .....	13

## Main objectives of the Panda SIEMFeeder service

The principal objective of Panda SIEMFeeder is to act as a link between the protection software installed on the computers on the network and the company's SIEM server, following the information flow below:

- Panda Adaptive Defense's continuous monitoring sends the Panda Security cloud the telemetry generated by the applications run on a customer's systems.
- Panda SIEMFeeder enriches this information with the security intelligence generated by Panda Security.
- Panda Importer recovers the enriched information from the Azure infrastructure assigned to the

customer and sends it directly to the SIEM server or to one of the supported platforms (Kafka and Syslog), for it to be leveraged later.

### Enriching the monitored activity

Panda Adaptive Defense monitors the actions executed by processes on computers. These actions are sent to the Panda Security cloud platform, where they are analyzed using machine learning techniques on a big data infrastructure in order to extract advanced security intelligence. This information enables Panda Security to classify each and every process run by customers, with 99.999% accuracy and near-zero false positive and false negative errors.

Panda SIEMFeeder combines the information collected from the events monitored by Panda Adaptive Defense and the security data generated, creating a single data flow compatible with the customer's SIEM server.

In order to take full advantage of Panda SIEMFeeder, it is not necessary to make any changes to users' computer settings: the service operates within the Panda Security infrastructure, receiving data from every computer on the customer's IT systems. This data is normalized, enriched, and sent to the customer's designated SIEM for exploitation.

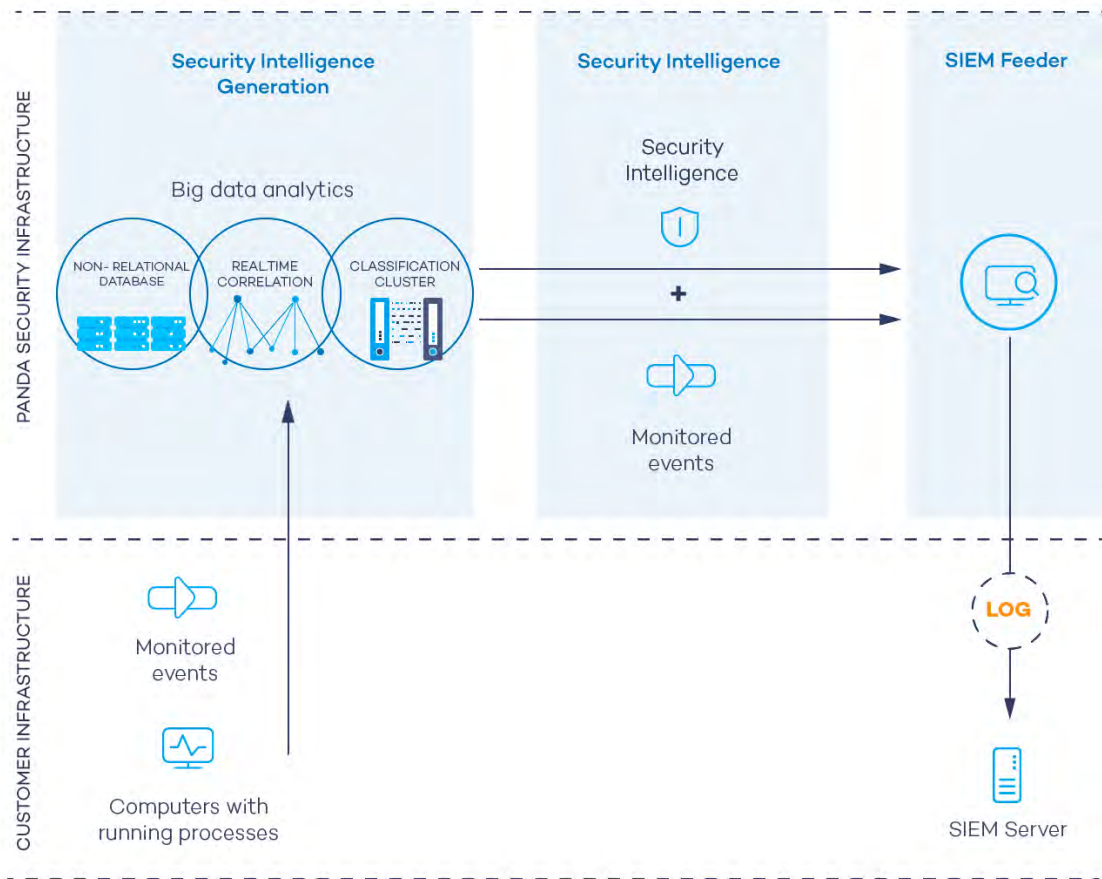


Figure 2.1: Information flow generated by Panda Adaptive Defense and Panda SIEMFeeder

## Main benefits of the Panda SIEMFeeder service

Panda SIEMFeeder provides customers' SIEM solutions with information about the activities performed by the processes run on their networks. This information enables administrators to:

- **Obtain visual information about the malware detected on the network**, whether it was run or not, the infection vector, and the actions taken by processes. This information helps administrators make decisions with regard to defining remedial actions and adjusting security policies.
- **View the actions executed by each process**, whether goodware, malware, or temporarily unknown, in order to detect the suspicious activity of recent programs. Panda SIEMFeeder compiles indicators that can be used to reach conclusions about their potential threat.
- **Monitor attempts to access confidential information**, preventing data leakage and theft. The service displays the Office files, databases, and other repositories of confidential information accessed by malware.
- **View network connections made by processes** in order to identify suspicious or potentially dangerous connections that could be used to steal data.
- **Locate all executed programs**, especially those with known vulnerabilities installed on users' computers, in order to design plans for updating software and adjust security policies.

## General architecture

Panda SIEMFeeder consists of the modules displayed in the following diagram:

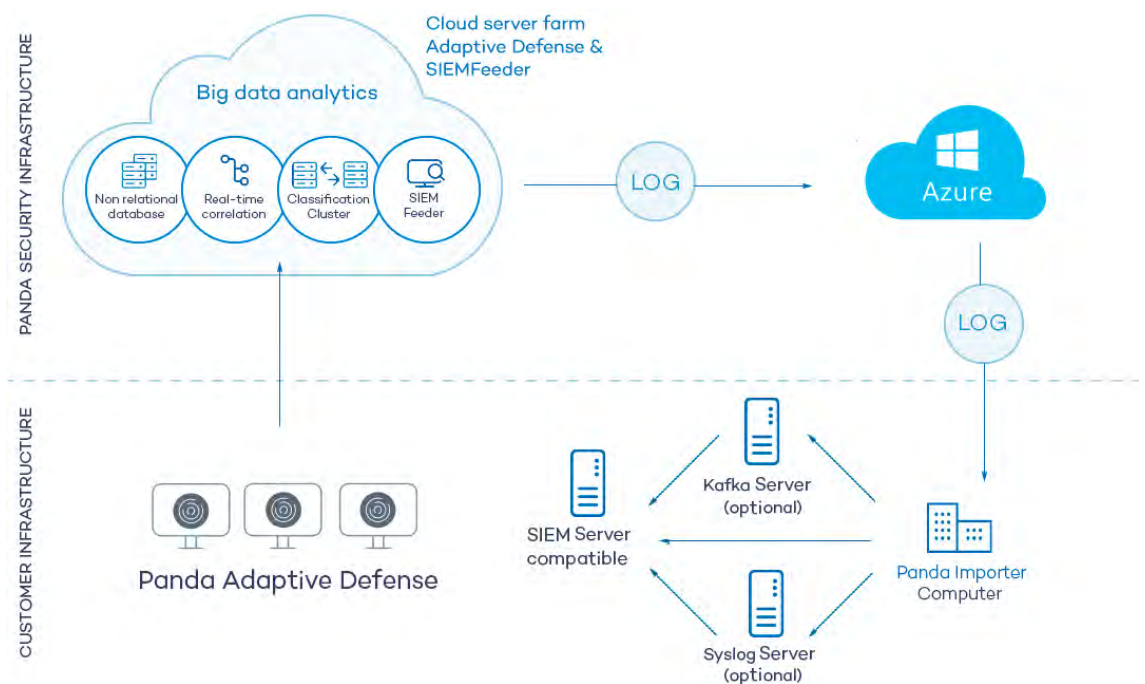


Figure 2.2: Logical diagram of the modules that make up Panda SIEMFeeder and their relationships

The figure shows the following items:

- Computers on the customer's network protected by Panda Adaptive Defense on Aether, Panda Adaptive Defense 360 on Aether, Adaptive Defense Traditional, or Adaptive Defense 360 Traditional.
- Panda Security **cloud**: this stores information from the processes run and analyzes it to extract security intelligence.
- Panda SIEMFeeder **service**: this collects events and security intelligence information and encapsulates it in the form of logs which are later sent to the customer.
- **Azure infrastructure**: this receives the logs from the Panda SIEMFeeder service and stores them temporarily until they are downloaded by the customer.
- **Panda Importer computer**: a computer on the customer's network that runs the Panda Importer process and checks if there are new logs available on the Azure infrastructure to download and store.
- **Kafka server (optional)**: the computer on the customer's network that manages the queues of logs received by Panda Importer and sends them to the company's SIEM server.
- **Syslog server (optional)**: the computer on the customer's network that collects the logs received by Panda Importer and sends them to the company's SIEM server.
- **SIEM server**: installed on the customer's premises, this collects the data downloaded by the Panda Importer computer in order to generate dashboards that help detect suspicious processes that may pose a threat to corporate security.
- **Local and perimeter firewalls**: these protect inbound and outbound data traffic between the Panda Importer computer and the Azure infrastructure.

## Benefits of the Azure infrastructure

Panda SIEMFeeder asynchronously generates logs with the information collected from the protected computers, and stores them temporarily until they are downloaded and integrated by the customer into their SIEM system. To do that, Panda Security makes use of cloud-based services hosted on the Azure infrastructure. These services have the following characteristics:

- **Cloud-based storage**: high availability service, meaning the service is available 24 hours a day, from anywhere in the world. Each customer is assigned 80 GB and the information is stored for a maximum of 7 days.
- **Encrypted communications**: the information exchanged between the Panda Importer computer and the Azure platform is encrypted with the SSL cryptographic protocol.
- **Authenticated communications**: in order to manage the Panda Importer authentication and authorization processes, two independent tokens are used to negotiate the shared key required to access the Panda SIEMFeeder platform and download the customer's network information. These tokens have different expiration times in order to ensure data confidentiality.



For more information, refer to "[Appendix 2: Security Architecture](#)" on page 55.

- **Compressed communications:** data sent is compressed to reduce bandwidth usage on the customer's premises.
- **Push-based data delivery mechanism:** to facilitate firewall configuration, the direction of the connections established between the Azure infrastructure and the customer's network is outbound from the customer's network. After the communication channel has been established, Azure sends all new logs available on the platform using push messages, instead of mechanisms such as pooling.

## Information flow

The activity of the processes run on the customer's network is collected by Panda Adaptive Defense through its continuous monitoring of the organization, and sent to the Panda Security cloud. There, it is enriched with security intelligence and placed in the Azure infrastructure, where it is temporarily stored until it is downloaded by the customer subscribed to the Panda SIEMFeeder service.

The Panda Importer program, which is run on a server on the customer's network, downloads the generated logs and manages them in different ways depending on how it is configured:

- Stores the logs in a folder accessible to the organization's SIEM server, managing the volume of stored files so as not to exceed the limits set by the administrator.
- Sends the logs to a Kafka queue server from which they are collected by the SIEM server at the rate its resources allow.
- Sends the logs to a Syslog server from which they are collected by the SIEM server at the rate its resources allow.

The customer's SIEM server imports the logs and analyzes them periodically to incorporate the information into its repository and generate the relevant data in dashboards.





# Chapter 3

## Panda SIEMFeeder for Partners architecture

Panda SIEMFeeder for Partners is the Panda Security service that provides the MSSP's SIEM platform with all the information and knowledge generated by the Panda Adaptive Defense products installed on customers' computers. Panda SIEMFeeder helps MSSPs discover unknown threats, targeted attacks, and APTs (Advanced Persistent Threats) on customers' systems.

### CHAPTER CONTENTS

<b>Aims of the Panda SIEMFeeder for Partners service</b> .....	<b>15</b>
Enriching the monitored activity .....	16
<b>Benefits of the Panda SIEMFeeder for Partners service</b> .....	<b>17</b>
<b>General architecture</b> .....	<b>18</b>
Benefits of the Azure infrastructure .....	19
<b>General functions of the service provider</b> .....	<b>19</b>

### Aims of the Panda SIEMFeeder for Partners service

The primary objective of Panda SIEMFeeder for Partners is to act as a link between the protection software installed on customers' computers and the MSSP's SIEM server, within the following general information flow:

- Panda Adaptive Defense's continuous monitoring sends the Panda Security cloud the telemetry generated by the applications run on the MSSP's customers' systems.
- Panda SIEMFeeder for Partners enriches this information with the security intelligence generated by Panda Security.
- Panda Importer recovers the enriched information from the Azure infrastructure assigned to the MSSP and sends it directly to the SIEM server or to one of the supported storage and queue management platforms (Kafka and Syslog), for it to be leveraged later.

### Enriching the monitored activity

Panda Adaptive Defense monitors the actions executed by processes on customers' computers. These actions are sent to the Panda Security cloud platform, where they are analyzed using machine learning techniques on a big data infrastructure in order to extract advanced security intelligence. This information enables Panda Security to classify each and every process run by customers, with 99.999% accuracy and near-zero false positive and false negative errors.

Panda SIEMFeeder for Partners combines the information collected from the events monitored by Panda Adaptive Defense and the security data generated, creating a single data flow compatible with the MSSP's SIEM server.

In order to take full advantage of Panda SIEMFeeder for Partners, it is not necessary to make any changes to users' computer settings: the service operates within the Panda Security infrastructure, receiving data from every computer on the customer's IT systems. This data is normalized, enriched, and sent to the MSSP's designated SIEM server.

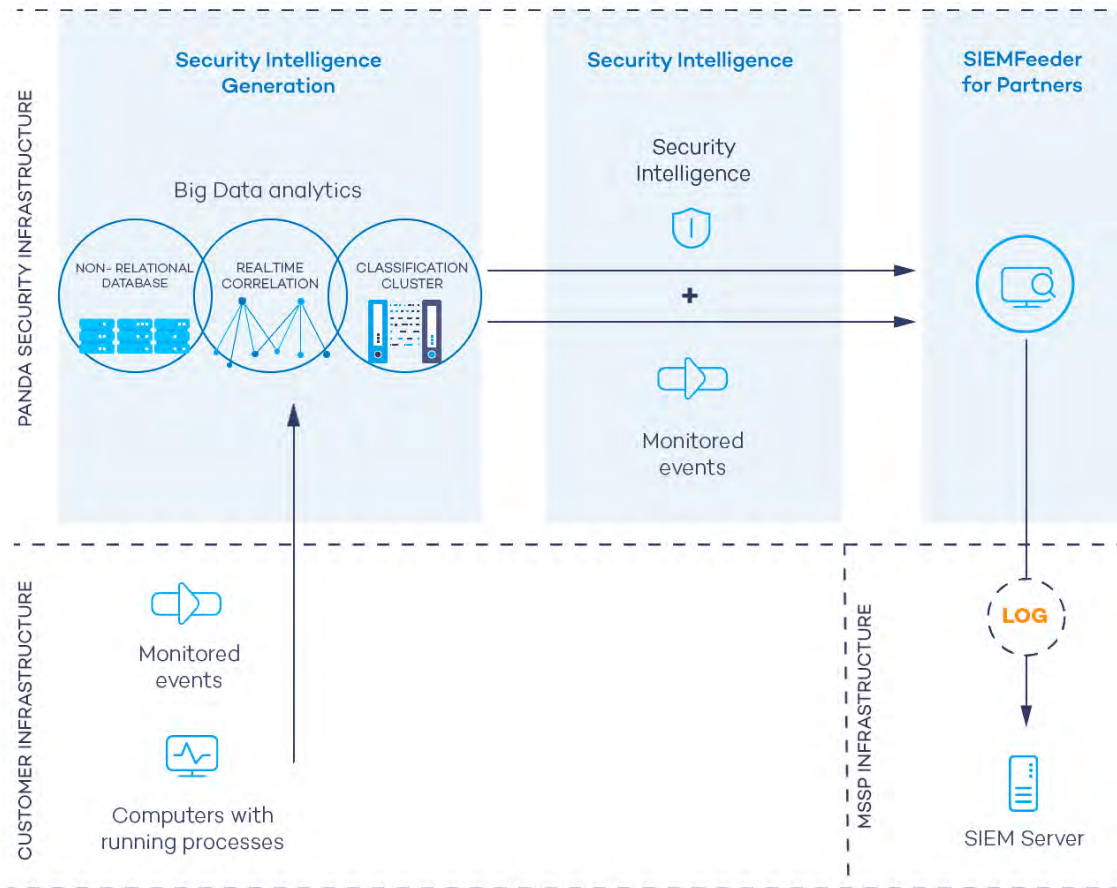


Figure 3.1: Information flow generated by Panda Adaptive Defense and Panda SIEMFeeder

## Benefits of the Panda SIEMFeeder for Partners service

Panda SIEMFeeder for Partners delivers information about the activity of processes run on the MSSP's customers' systems. This information enables MSSPs to:

- **View details of the malware detected on customers' networks**, and see whether it was run or not, the infection vector, and the actions taken by processes. This information helps administrators make decisions with regard to defining remedial actions and adapting security policies.
- **View the actions executed by each process**, whether goodware, malware, or temporarily unknown, in order to detect the suspicious activity of recent programs. Panda SIEMFeeder for Partners compiles indicators that can be used to reach conclusions about their potential threat.
- **View access by processes to confidential information**, preventing data leakage and theft. The service displays the Office files, databases, and other repositories of confidential information accessed by malware.
- **View network connections made by processes** in order to identify suspicious or potentially dangerous connections that could be used to steal data.
- **Locate all executed programs**, especially those with known vulnerabilities installed on users' computers, in order to design plans for updating software and adapting corporate security policies.
- **Apply centralized settings through Panda Partner Center**. All MSSPs' customers' settings can be pushed out simultaneously.
- **Install the service simply and securely** as the telemetry download service only needs to be configured once, and new customers are added without having to deploy or install any additional components. Downloads are also secure thanks to secure TLS (Transport Layer Security) connections from the Panda cloud.
- **Keep storage costs down** by filtering events before they reach the MSSP's infrastructure, thereby minimizing the bandwidth and space consumed.

## General architecture

The Panda SIEMFeeder for Partners service consists of the modules displayed in figure 3.2:

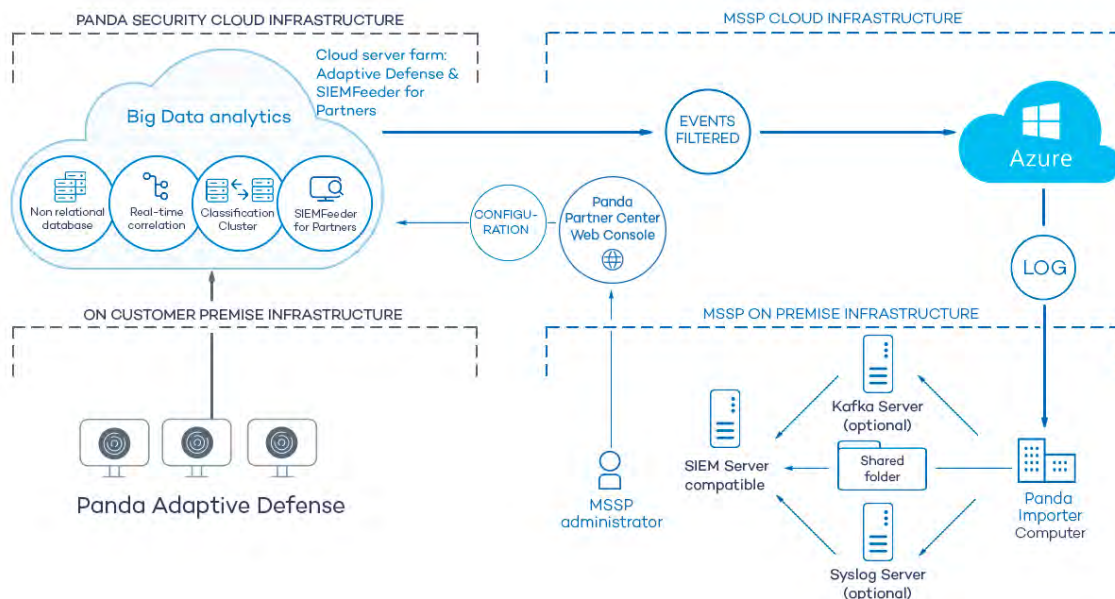


Figure 3.2: Logical diagram of the modules that make up Panda SIEMFeeder for Partners and their relationships

The figure shows the following items:

- **Computers on the customer's network:** protected by Panda Adaptive Defense on Aether or Panda Adaptive Defense 360 on Aether.
- **Panda Security cloud:** this stores information from the processes run and analyzes it to extract security intelligence.
- **Panda SIEMFeeder for Partners service:** this receives events and security intelligence information and encapsulates them in the form of logs which are later sent to the MSSP's Azure infrastructure.
- **MSSP's Azure infrastructure:** this receives the logs from the Panda SIEMFeeder for Partners service on the cloud infrastructure assigned to the MSSP and stores them temporarily until downloaded from Panda Importer.
- **Panda Importer computer:** a computer on the MSSP network that runs the Panda Importer process and checks if there are new logs available on the Azure infrastructure to download and store.
- **Kafka server (optional):** the computer on the MSSP's network that manages the queues of logs received by Panda Importer and sends them to the SIEM server.
- **Syslog server (optional):** the computer on the MSSP's network that collects the logs received by Panda Importer and sends them to the SIEM server.
- **Share folder (optional):** a storage system on the MSSP's network where Panda Importer deposits logs in the absence of more advanced resources, such as a Syslog or Kafka server.
- **SIEM server:** installed on the MSSP's premises, this collects the data downloaded by the Panda Importer computer in order to generate dashboards that help detect suspicious processes that may pose a threat to customers.

- **Local and perimeter firewalls:** these protect inbound and outbound data traffic between the Panda Importer computer and the Azure infrastructure.
- **Panda Partner Center console:** this enables the MSSP to activate the Panda SIEMFeeder for Partners service for customers and configure it in order to receive only selected events.

## Benefits of the Azure infrastructure

Panda SIEMFeeder for Partners generates logs asynchronously and stores them temporarily until they are collected and integrated in the SIEM server. To do that, Panda Security makes use of cloud-based services hosted on the Azure infrastructure. These services have the following characteristics:

- **Cloud-based storage:** high availability service, meaning the service is available 24 hours a day, from anywhere in the world. Each MSSP is assigned 80 GB and the information is stored for a maximum of 7 days.
- **Encrypted communications:** the information exchanged between the MSSP's Panda Importer computer and the Azure platform is encrypted with the SSL cryptographic protocol.
- **Authenticated communications:** in order to manage the Panda Importer authentication and authorization processes, two independent tokens are used to negotiate the shared key required to access the Panda SIEMFeeder for Partners platform and recover the MSSP's customers' network information. These tokens have different expiration times in order to ensure data confidentiality.



For more information, refer to "[Appendix 2: Security Architecture](#)" on page 55.

- **Compressed communications:** the data sent is compressed to reduce bandwidth usage on the MSSP's premises.
- **Push-based data delivery:** To aid configuration of firewalls, the direction of the connections established with the Azure infrastructure is outbound from the MSSP's network. After the communication channel has been established, Azure sends all new logs available on the platform using push messages, instead of mechanisms such as pooling.

## General functions of the service provider

To recover the security information generated by customers, the security service provider has to interact with the items shown in figure 3.2. To do this, it is necessary, in general, to follow the action list below:

- Check that the subscription to the Panda SIEMFeeder for Partners service is active in Panda Partner Center. Refer to [License management](#) in the [Partner Center Administration Guide](#). If your subscription has expired or you are not a Panda SIEMFeeder for Partners, customer, contact your assigned Panda Security sales representative.
- Check the connectivity of the items shown in figure 3.2, especially with respect to communication between Panda Importer and Azure. Refer to "[Firewall settings](#)" on page 23.

- Check the deployment and installation requirements. Refer to "[Deployment and integration requirements](#)" on page 21.
- Install Panda Importer on your IT infrastructure. Refer to "[Installing and configuring Panda Importer on Windows systems](#)" on page 29 or "[Installing and configuring Panda Importer on Linux systems](#)" on page 41.
- Create a Panda SIEMFeeder for Partners setting profile in Panda Partner Center detailing the groups of events to be sent to the Azure infrastructure. Refer to [SIEMFeeder for Partners settings](#) in the [Partner Center Administration Guide](#).
- Associate the newly created settings with the customers. Refer to [Assigning and sending settings](#) in the [Partner Center Administration Guide](#). Depending on the **Enable real-time communication** option selected in the security product console for each customer, settings will either be assigned immediately or with a maximum delay of 10 minutes. Refer to "[Panda Adaptive Defense and Panda Adaptive Defense 360 on Aether guides](#)" for the administration guide of the product contracted by the customer.

After all steps have been completed, the MSSP's customers' computers start to send information which is stored on the Azure infrastructure until the MSSP's Panda Importer computer downloads it.

# Chapter 4

## Deployment and integration requirements

The requirements necessary to correctly implement the Panda SIEMFeeder and Panda SIEMFeeder for Partners services fall into three categories:

- Licenses and user information
- Deployment and operation
- Integration into the existing IT infrastructure

### CHAPTER CONTENTS

<b>Licenses and required information</b> - - - - -	<b>-21</b>
Panda SIEMFeeder .....	22
Panda SIEMFeeder for Partners .....	22
<b>Deployment and integration requirements</b> - - - - -	<b>-22</b>
Panda Importer computer .....	22
Firewall settings .....	23
Proxy server settings .....	23
Bandwidth .....	23
<b>Data leverage requirements</b> - - - - -	<b>-24</b>
Supported SIEM servers .....	24
SIEM server settings .....	24
Characteristics of the downloaded log files .....	25
<b>Sizing recommendations for the Panda Importer computer</b> - - - - -	<b>-25</b>
Bandwidth sizing .....	25
Hardware sizing recommendations for the Panda Importer computer .....	26
<b>Service availability</b> - - - - -	<b>-26</b>

## Licenses and required information

Both Panda SIEMFeeder and Panda SIEMFeeder for Partners require the customer ID sent in the welcome email and the details of a user of the management console of the security product purchased by the organization and compatible with the service:

- Panda Adaptive Defense on Aether (compatible with Panda SIEMFeeder and Panda SIEMFeeder

for Partners)

- Panda Adaptive Defense 360 on Aether (compatible with Panda SIEMFeeder and Panda SIEMFeeder for Partners)
- Panda Adaptive Defense Traditional (compatible with Panda SIEMFeeder)
- Panda Adaptive Defense 360 Traditional (compatible with Panda SIEMFeeder)

## Panda SIEMFeeder

- For Panda Adaptive Defense on Aether or Panda Adaptive Defense on Aether, use the email address and password of a console user with the Full Control role.
- For Panda Adaptive Defense Traditional or Panda Adaptive Defense 360 Traditional, use the console default user.
- An email account managed by the administrator. This will be used to receive notifications about the service status.
- The customer ID included in the welcome email sent to the network administrator when the **Panda Adaptive Defense** service was provisioned.

## Panda SIEMFeeder for Partners

- The email address and password of a Panda Adaptive Defense on Aether or Panda Adaptive Defense on Aether user in the MSSP with the Full Control role.
- The customer ID included in the welcome email sent to the MSSP technician when the **Panda Adaptive Defense** service was provisioned.
- An email account managed by the administrator. This will be used to receive notifications about the service status.

# Deployment and integration requirements

The requirements necessary to deploy and use Panda SIEMFeeder and Panda SIEMFeeder for Partners are described in the following sections:

- User computers protected by Panda Adaptive Defense.
- Active Panda SIEMFeeder or Panda SIEMFeeder for Partners license.
- Computer with Panda Importer installed.
- Firewall settings.
- Proxy server settings.
- Enough bandwidth to receive data.

## Panda Importer computer

This computer must meet the following minimum requirements:



- 1 GHz or faster processor.
- At least 512 MB of RAM.
- Enough free space to store the information received. The average space taken up on the storage device is **1 MB per computer/hour**. The information is stored in uncompressed log files in LEEF format.



To change to CEF format in Panda SIEMFeeder, send an email to [panda.ad\\_siemfeeder@watchguard.com](mailto:panda.ad_siemfeeder@watchguard.com). To change the format of log files in Panda SIEMFeeder for Partners, access Panda Partner Center and modify the assigned settings. Refer to **SIEMFeeder for Partners settings** in the **Partner Center Administration Guide**.

- The Panda Importer program must be installed and configured correctly. For more information, refer to “[Installing and configuring Panda Importer on Windows systems](#)” on page 29.
- The access information specified in section “[Licenses and required information](#)”.
- An NTP server is required for computer time synchronization.

## Firewall settings

In order for the Panda Importer computer to be able to download log files from the Azure infrastructure, all intermediate firewalls must allow network traffic with the following characteristics:

- Access to the URL <https://auth.pandasecurity.com>.
- Access to the URL <https://storage.accesscontrolmng.pandasecurity.com>.
- Access to the URL <sb://pac100siemfeeder.servicebus.windows.net>.
- **Communication source:** Panda Importer computer.
- **Communication target:** Azure infrastructure.
- **Connection type:** outbound from the customer's network.
- **Layer 3 (transport) protocol:** TLS 1.2.
- **Layer 4 (application) protocol:** HTTPS (port 443), Amqp (ports 5671 and 5672), Amqp WebSockets (port 443).

## Proxy server settings

If Panda Importer accesses the Panda Security cloud via a proxy server, the proxy server must have access via Web Sockets enabled. In that case, Panda Importer will use the Amqp WebSockets protocol instead of Amqp.

## Bandwidth

Each user computer generates an average of 500 KB of compressed information in gzip format per hour.

The required bandwidth depends directly on the number of user computers monitored on the customer's network and the maximum allowable delay based on the organization's needs. Two thresholds can be established:

- **Minimum threshold:** minimum bandwidth required to receive all logs without losing files due to expiration of the log retention period. For more information, refer to “[Service availability](#)” on page 26. The log generation rate depends on multiple factors (computer activity, the computer's role within the organization, etc.). With a low bandwidth value, the service will leverage valley hours (non-working hours when most computers are turned off) to receive the log files generated during peak hours.



*A low bandwidth value will lead to delays in receiving logs, preventing them from being received and processed in real time by the organization's SIEM server.*

- **Maximum threshold:** the bandwidth required to download all log files as they are generated.

## Data leverage requirements

To leverage the delivered data, install and configure a SIEM server compatible with any of the supported log formats.

### Supported SIEM servers

The SIEM products compatible with the Panda SIEMFeeder or Panda SIEMFeeder for Partners service are those that support the Common Event Format (CEF) developed by ArcSight and the Log Event Extended Format (LEEF) developed by QRadar.

The data is received in one of the two formats: CEF or LEEF. The following is a partial list of SIEM servers compatible with the aforementioned formats:

- AlienVault Unified Security Management (USM)
- Fortinet (AccelOps) FortiSIEM
- Hewlett Packard Enterprise (HPE) ArcSight
- IBM's QRadar Security Intelligence Platform
- Intel Security's McAfee Enterprise Security Manager (ESM)
- LogRhythm
- SolarWinds Log & Event Manager (LEM)
- Splunk's Security Intelligence Platform

### SIEM server settings

In order for the SIEM server to receive the data, you must set as source the system chosen for storing the data and correctly map the delivered events and fields. Available sources are:

- The folder where the Panda Importer computer stores the received logs.
- The Kafka queue server that collects the logs sent by Panda Importer.
- The Syslog server that collects the logs sent by Panda Importer.



For a full description of the delivered data, refer to the [Panda SIEMFeeder Event Description Guide](#).

## Characteristics of the downloaded log files

- Each log file has a maximum size of 256 KB in compressed format.
- Log files are stored decompressed in the configured folder respecting the maximum size defined in the settings.
- Each log file has a name in the format `yyyymmdd-hhmm-(xxxxxx)`, where:
  - **yyyy**: year created.
  - **mm**: month created.
  - **dd**: day created.
  - **hh**: time created (hours).
  - **mm**: time created (minutes).
  - **-(xxxxxx)**: number assigned to the log file if more than one file is created within the same minute.

# Sizing recommendations for the Panda Importer computer

## Bandwidth sizing

- Calculate the bandwidth required based on the number of monitored computers on your network (500 KB per computer/hour).
- Use the value calculated in the previous point to set QoS rules on the router in your organization that connects the Panda Importer computer to the Internet. Monitor your bandwidth usage at all times.
- Compare the date the log files were received on the Panda Importer computer to the date the events were generated to find out if there are delays in receiving data. The generation date of the log files is provided by the operating system. The generation date of each event is part of the log file's internal information schema. For a detailed description of all the fields included in log files, refer to the [Panda SIEMFeeder Event Description Guide](#).
- If the difference between the log receiving date and the event generation date increases gradually over time, check the received data flow.
- If the data flow is using all bandwidth reserved by the QoS rule, it means that Panda SIEMFeeder is generating a number of log files too large for the bandwidth allocated to the Panda Importer computer. If, after 7 days (a full week to include periods of lower activity), the above mentioned

difference does not decrease, or the organization requires a shorter event receiving time, increase the bandwidth allocated to the service by the QoS rule.

- If the bandwidth allocated to the service is not completely used, but the difference between the log receiving date and the event generation date increases, there is a bottleneck in the Panda Importer computer hardware. Refer to “[Hardware sizing recommendations for the Panda Importer computer](#)”.

## Hardware sizing recommendations for the Panda Importer computer

If the difference between the log receiving date and the event generation date increases gradually over time, but the bandwidth allocated to the service is not completely used by the received data flow, it is very likely that there is a bottleneck in the Panda Importer computer hardware.

Because Panda Importer is a program that recovers messages from a queue-type structure, its CPU and RAM requirements are relatively low. In complex networks, with a large number of monitored computers, the main reason for slow download speeds is usually a bottleneck in the storage system of the computer running Panda Importer. Follow the advice below to determine the source of bottlenecks and resolve them. To see CPU and hard disk performance stats, you must start the Windows task manager with Panda Importer running in command-line or service mode.

- **High CPU usage with free cores:** Panda Importer is a single-threaded program, that is, it uses only one of the cores of the processor installed on the server. If the Windows task manager indicates that there is sustained CPU usage of more than 80% on one of the cores, run several instances of the program with different target folders. A conservative recommendation is to run one instance of Panda Importer for each core on the computer. For more information, refer to chapter “[Installing and configuring Panda Importer on Windows systems](#)” on page 29
- **High CPU usage without free cores:** if the Windows task manager indicates that there is sustained CPU usage of more than 80% on all cores, it is advisable to install Panda Importer on an additional server or change the CPU to a more powerful one.
- **High bandwidth consumption in the storage system:** if the Windows task manager indicates high hard-disk usage, it is advisable to replace one or all of the components of the storage subsystem:
  - Replace mechanical disk drives with solid state drives (SSD).
  - Install a RAID-0 system or equivalent that allows data to be written to several drives at a time.
  - Replace the data bus interface with a more up-to-date version (SATA, eSATA, SAS, etc.).

## Service availability

Panda SIEMFeeder is available 24/7. Any service interruption is notified via email to the administrator account provided during the registration process.

To prevent data loss in the event of connectivity failure, unavailability of the customer's Panda Importer computer, or any other error, Panda Security retains the logs generated and not delivered to the customer for the following time periods:

- **Maximum number of days that logs are retained on the Azure platform:** 7 days.
- **Maximum amount of data retained on the Azure platform:** 80 GB for each customer.



# Chapter 5

## Installing and configuring Panda Importer on Windows systems

Panda Importer is the application responsible for downloading the events logged by Panda SIEMFeeder and Panda SIEMFeeder for Partners from the Azure infrastructure. These events are stored in log files which, depending on the configured settings, are decompressed by Panda Importer and placed in a local or remote folder, or sent to a compatible server (Kafka or Syslog).

### CHAPTER CONTENTS

<b>Installation requirements</b> .....	<b>-30</b>
Required information .....	30
Operating system and required libraries .....	30
Required permissions .....	30
Firewall configuration .....	30
NTP server .....	31
<b>Installation and configuration</b> .....	<b>-31</b>
Download the installation package .....	31
<b>Configuration</b> .....	<b>-32</b>
Configure the connection method .....	32
Configure the platform to use .....	32
Configure the log storage and send mode .....	33
Configure the execution mode .....	33
Update the configuration.json file .....	33
<b>Configuring multiple instances</b> .....	<b>-33</b>
Multiple instances in command-line mode .....	34
Multiple instances in service mode .....	34
<b>Configuring log storage and forwarding</b> .....	<b>-35</b>
Storing logs in a local or remote folder .....	35
Sending logs to a Kafka server .....	35
Sending logs to a Syslog server .....	36
<b>Copying downloaded logs to multiple locations</b> .....	<b>-36</b>
<b>Running and stopping the program</b> .....	<b>-37</b>
In command-line mode .....	37
In service mode .....	38
<b>Changing the settings</b> .....	<b>-38</b>
<b>Manually editing the Panda Importer settings</b> .....	<b>-38</b>

Parameters related to log files containing events .....	38
Parameters related to the execution log .....	39

## Installation requirements

### Required information

For the information required by Panda Importer for its correct operation, refer to “[Licenses and required information](#)” on page 21.

### Operating system and required libraries

Make sure the computer that will run the Panda Importer program meets the following requirements:

**It has .NET Framework 4.6.2 or higher installed:** if an earlier version is installed, go to <https://dotnet.microsoft.com/en-us/download/dotnet-framework/net462> to download the appropriate version. Panda Importer is compatible with .NET Framework up to version 4.8.

- **Supported operating systems:** Windows 11, Windows 10, Windows 8.1, Windows 8, Windows 7 Service Pack 1, Windows Server 2022, Windows Server 2019, Windows Server 2016, Windows Server 2012 R2, Windows Server 2012, Windows Server 2008 R2 SP1.

### Required permissions

Panda Importer can be run as a command-line program or unattended as a Windows service.

- When run as a service, Panda Importer runs under the `local system` account and needs admin permissions to be correctly installed.
- When run as a command-line program, it doesn't require any specific permissions beyond access to the resources it may need; for example, write access to the folder configured to store the downloaded logs.

### Firewall configuration

In order for the Panda Importer computer to be able to download log files from the Azure infrastructure, all intermediate firewalls must allow network traffic with the following characteristics:

- Access to the URL <https://auth.pandasecurity.com>.
- Access to the URL <https://storage.accesscontrolmgr.pandasecurity.com>.
- Access to the URL <sb://pac100siemfeeder.servicebus.windows.net>.
- **Communication source:** Panda Importer computer.
- **Communication target:** Azure infrastructure.
- **Connection type:** outbound from the customer's network.
- **Layer 3 (transport) protocol:** TLS 1.2.



- **Layer 4 (application) protocol:** HTTPS (port 443), Amqp (ports 5671 and 5672), Amqp WebSockets (port 443).

### NTP server

To download the logs stored in the Azure infrastructure, an authentication and authorization process must be completed that involves generating a token. This token is issued with an expiration date to improve the security of the entire process, therefore, the clocks of both communication endpoints must be synchronized. For this reason, it is required that the computer that runs Panda Importer have the Windows Time Service (or an equivalent service) up and running in order to get the time from an NTP server. For more information, refer to <https://docs.microsoft.com/en-us/windows-server/networking/windows-time-service/accurate-time>.

## Installation and configuration

For more information about the origin of the errors that may occur during the installation process, refer to “[Appendix 1: Troubleshooting](#)” on page 53.

To install and configure Panda Importer, perform the steps below in the listed order:

1. Download and decompress the .ZIP file containing the installer: Refer to “[Download the installation package](#)”.
2. Indicate the connection method supported by the IT infrastructure that will host the Panda Importer computer: direct connection or through a corporate proxy. Refer to “[Update the configuration.json file](#)”.
3. Indicate the platform where your Panda security products reside. Refer to “[Configure the platform to use](#)”.
4. Configure the method to be used to send and store the received logs. Refer to “[Configure the log storage and send mode](#)”.
5. Configure how Panda SIEMFeeder will be run: as a service or from the command line. Refer to “[Configure the execution mode](#)”.
6. Update the `configuration.json` file with the new installation settings. Refer to “[Update the configuration.json file](#)”.

### Download the installation package

Download the .ZIP package of the Windows version of Panda Importer from <https://www.pandasecurity.com/en/support/card?id=950031> and decompress it to a folder on your computer. This package contains the following main files:

- `EventsFeederImporter.Host.exe`: downloads the log files containing the events that occurred on the customer's computers, and stores them on the computer hard disk or forwards them to another computer depending on the configuration defined by the administrator. This program can be run as a process from the command line or as a service (refer to “[Configure the execution mode](#)”).

- `EventsFeederImporter.ConfigAssistant.exe`: displays the configuration wizard containing the parameters required to configure Panda Importer.
- `Configuration.json`: this file contains the program settings. All personal data is stored obfuscated to prevent security leaks.

Panda Importer can be run multiple times simultaneously on the same computer. Each Panda Importer instance requires a separate configuration file. Refer to "[Configuring multiple instances](#)".

## Configuration

This section describes the steps you must take to generate the configuration file required for a single Panda Importer instance to run in command-line or service mode and connect to the Azure infrastructure in order to download logs. All other scenarios are based on this configuration.

To configure Panda Importer, you must run the `EventsFeederImporter.ConfigAssistant.exe` program in command-line mode and answer "Yes" to the question **Do you want to change the configuration settings? [Yes / No]** A new configuration file that overrides the existing one is generated and the configuration wizard is launched.



To install Panda Importer as a service, you must run `EventsFeederImporter.ConfigAssistant.exe` with administrator permissions. Right-click the file and select **Run as administrator**.

### Configure the connection method

If the computer is behind a proxy server, answer **Y** to the question **Is Event Importer behind a proxy server? [Yes/No]** You will be prompted to enter the proxy server IP address, as well as the user name and password if the proxy server requires authentication.

Access through the configured proxy server is only used to connect to the Azure infrastructure assigned to the customer or MSSP. It is not used to connect to other resources such as the file server, the Kafka server, or the Syslog server.

### Configure the platform to use

- Specify the platform to which the Panda Adaptive Defense product purchased by your organization belongs. Choose an option in **Select your platform: [C]urrent, [L]egacy, or [W]G Endpoint Security:**
  - **C (Current)**: if the account used belongs to the Aether platform.
  - **L (Legacy)**: if the account used belongs to the traditional platform.
  - **W (Watchguard)**: this does not apply for Panda Security customers.
- Enter the email address and password of the login account used to access the Panda Adaptive Defense on Aether console. For Panda Adaptive Defense Traditional, use the console default user.

- Enter the Customer ID specified in the welcome email. Once entered, Panda Importer will generate an access token it will use internally to subscribe to the service and download the generated log files.

## Configure the log storage and send mode

For more information about how to choose the method to be used to store and send the downloaded logs, refer to [“Configuring log storage and forwarding”](#).

## Configure the execution mode

Panda Importer can be run as a service or in command-line mode. Answer **Y** or **N** to the question **Do you want to register Event importer as a Windows service? [Yes / No]**

- **Y**: this installs the program as a service. Panda Importer will install automatically as a service only if the user who started the installation process has admin permissions.



Select the **(Y)** option only if you are going to install and run a single Panda Importer instance as a service on your computer. In all other cases, select **(N)**. Refer to [“Configuring multiple instances”](#).

- **N**: select this option to run one or multiple instances from the command line or to run multiple instances of the program as a service. Refer to [“Configuring multiple instances”](#).

## Update the configuration.json file

After it finishes running, the configuration wizard updates, with the entered information, the `configuration.json` file located in the same folder. Then, Panda Importer starts downloading the logs stored in the Azure infrastructure.

The `configuration.json` file contains the following data:

- Information about the customer whose logs are downloaded.
- Information about the method selected to send and store the downloaded logs.
- Information about the execution mode (command line or service).

# Configuring multiple instances

You must configure multiple instances of Panda Importer in the following cases:

- If the computer that runs the Panda Importer program shows symptoms indicating a lack of resources similar to those described in section [“Hardware sizing recommendations for the Panda Importer computer”](#) on page 26, we recommend that you install one or more additional instances of the program and run them concurrently.
- If you require that a single computer with Panda Importer download logs from more than one

customer simultaneously, but you are not using Panda SIEMFeeder for Partners.



To download logs files from multiple customers and centralize all downloads through a single Panda Importer instance, use Panda SIEMFeeder for Partners. Refer to “[Panda SIEMFeeder for Partners architecture](#)” on page 15.

## Multiple instances in command-line mode

- Download the latest version of Panda Importer from <https://www.pandasecurity.com/en/support/card?id=950031> and decompress it to a separate folder for each customer whose logs you want to download.
- Configure each application independently using the steps described in section “[Configuration](#)” to install it in command-line mode.
- Run each application independently.

## Multiple instances in service mode

To run multiple instances of Panda Importer in service mode, you must first install it in command-line mode and then register it manually as a service. To do this, follow the steps below:

- This example uses folders `c:\users\customer1` and `c:\users\customer2`.
- Follow the steps in section “[Multiple instances in command-line mode](#)”.
- Use `control + c` to stop the execution of each running instance.
- If you intend to run Panda Importer as a service, you must register it manually. To do this, you must give each instance a different name, using the following parameters: `servicename`, `description`, and `displayname`. Run the following commands as administrator:

```
PS C:\> cd c:\users\customer1
PS C:\users\customer1> EventsFeederImporter.Host.exe install
-servicename:ServiceCustomer1
-description: ServiceCustomer1
-displayname: ServiceCustomer1
PS C:\> cd c:\users\customer2
PS C:\users\customer2> EventsFeederImporter.Host.exe install
-servicename:ServiceCustomer2
-description: ServiceCustomer2
-displayname: ServiceCustomer2
```

- Start each Panda Importer instance.

```
PS C:\> cd c:\users\customer1
PS C:\users\customer1> EventsFeederImporter.Host.exe start
-servicename:ServiceCustomer1
PS C:\> cd c:\users\customer2
PS C:\users\customer2> EventsFeederImporter.Host.exe start
-servicename:ServiceCustomer2
```

## Configuring log storage and forwarding

Panda Importer provides several methods to store and forward logs based on the network architecture, the available resources, and the volume of information received from the Azure infrastructure:

- Storing the logs in a local or remote folder.
- Sending the logs to a Kafka server.
- Sending the logs to a Syslog server.

The storage method is configured in the configuration wizard when the following question is shown: **Importer enables you to send received events simultaneously to various channels. Do you want to change the current channel settings? [Yes / No]**. Selecting **Y** deletes the existing storage and forwarding settings (if any) and generates new settings.

### Storing logs in a local or remote folder

- First, create the folder where the log files will be stored. This can be a local folder on the computer running Panda Importer or a remote, shared drive/resource.
- If you intend to run multiple instances of Panda Importer, create a separate folder for each instance. Otherwise, some logs might be lost during collection and storage.
- Select **F** when the following message appears: **Select where you want to deliver received events: [F]ile on disk, [K]afka topic/queue, or [S]yslog server.**
- Enter the full folder path for each instance of Panda Importer.
- Enter the extension of the files the events received from Panda Importer will be dumped to.
- To finish configuring the storage method, answer **No** to the question **Do you want to configure another delivery channel? [Yes / No]**.

### Sending logs to a Kafka server

- Select **K** when the following message appears: **Select where you want to deliver received events: [F]ile on disk, [K]afka topic/queue, or [S]yslog server.**
- Enter the IP address or domain name of the Kafka server and the listening port separated by ":",
- Enter the name of the queue/topic that logs will be sent to on the Kafka server.
- Enter the communication protocol that Panda Importer will use to send logs to the Kafka server:
  - **[N]one**: press **N** to send logs in unencrypted format.
  - **[S]sl**: press **S** to send logs using SSL encryption.
  - **s[A]ssl**: press **A** to send logs using SASL/SSL encryption.
  - **saslplain[T]ext**: press **T** to send logs using SASL/PLAIN encryption.
- Depending on whether the communication protocol chosen encrypts data or not, you will have to

indicate the path of the file that contains the certificate issued by the CA configured on the Kafka server.

- To finish configuring the delivery method, answer **No** to the question **Do you want to configure another delivery channel? [Yes / No]**.

## Sending logs to a Syslog server

- Select **S** when the following message appears: **Select where you want to deliver received events: [F]ile on disk, [K]afka topic/queue, or [S]yslog server.**
- Select the format configured on the Syslog server for the received logs: **RFC[5]424** or **RFC[3]164**.
- Enter the IP address or domain name of the Syslog server and the listening port separated by ":",
- Select the transport protocol configured on the Syslog server for the received logs: **[T]cp** or **[U]dp**.



*To make sure all log files sent by Panda Importer are received on the Syslog server, we recommended configuring the use of the TCP transport protocol on both ends. Otherwise, in overload situations, the UDP protocol might inadvertently discard logs.*

- Select the secure protocol to use to encrypt communications between the Syslog server and Panda Importer. **[N]one** or **Tls1.[2]**.
- Select the end-of-message marker configured on the Syslog server for the received logs: **[C]r**, **[L]f**, **c[R]lf**.



*If the transport protocol chosen is UDP, no end-of-line marker is used.*

*If the transport protocol chosen is TCP or TLS, the Null end-of-line marker is always used.*

- If the communication protocol chosen encrypts data, indicate the location of the certificate issued by the CA configured on the Syslog server.
  - **[F]ile**: the CA's certificate is in a separate file.
  - **[C]ert Store**: the CA's certificate is located in the local certificate store on the computer where Panda Importer is run; more specifically, in the Trusted People Certificates branch.
- To finish configuring the delivery method, answer **No** to the question **Do you want to configure another delivery channel? [Yes / No]**.

## Copying downloaded logs to multiple locations

Panda Importer allows logs to be downloaded to multiple locations simultaneously. Each log downloaded this way will be removed from the download queue if at least one of the target locations is correctly updated. Therefore, should errors occur during log collection, the different locations might end up with a different number of logs at the end of the process. To implement the ability to download

logs to multiple locations, the 'channels' feature is used. A channel indicates the storage type used by Panda Importer and its settings.

To configure Panda Importer, follow the steps below:

- Install Panda Importer as described in section "[Configuration](#)".
- Stop Panda Importer as described in section "[Running and stopping the program](#)".
- Add a new channel to the existing collection in file `configuration.json`. The `channels` parameter syntax is the following:

```
"Channels": [{ channel 1 parameters} , {channel 2 parameters}, ...]
```

- Each channel indicates the storage type used to store logs and its associated settings.

Below you can find an example of a Panda Importer configuration with two channels: the first channel leaves logs in the `Log1` folder, and the second channel leaves them in folder `Log2`:

```
"Channels": [{
  "Type": "LocalDisk",
  "Name": "LD1",
  "Configuration": {
    "fullPath":
"D:\\\\SIEMFeeder\\\\EventFeederImporter 1.0.3 Pro\\\\Log1",
    "filesSplitFormat": "1m",
    "filesSizeLimitInBytes": 102400,
    "directoryMaxSizeInMb": 1024
  }
}, {
  "Type": "LocalDisk",
  "Name": "LD2",
  "Configuration": {
    "fullPath":
"D:\\\\SIEMFeeder\\\\EventFeederImporter 1.0.3 Pro\\\\Log2",
    "filesSplitFormat": "1m",
    "filesSizeLimitInBytes": 102400,
    "directoryMaxSizeInMb": 1024
  }
},]
```

## Running and stopping the program

After the configuration wizard is completed, Panda Importer starts automatically. To stop or start the program later, follow the steps below:

### In command-line mode

- To start Panda Importer, double-click the `EventsFeederImporter.Host.exe` file or run it from the command line.
- To stop Panda Importer, press `Control+C` in the command window.

## In service mode

- The service is automatically configured to start when the operating system boots. To run Panda Importer after a manual stop, access the Services snap-in of the operating system's MMC console and find the `EventsFeederImporter` service (this is the default name used by the installation wizard provided the service was not manually registered). Right-click it and select Start.
- To stop Panda Importer, access the Services snap-in of the operating system's MMC console and find the `EventsFeederImporter` service. Right-click it and select Stop.

## Changing the settings

To regenerate the Panda Importer settings, follow these steps:

- Stop the process if it is running. Refer to "[Running and stopping the program](#)".
- Run the `EventsFeederImporter.ConfigAssistant.exe` program again, either from the command-line window or by double-clicking on it.
- Answer **Y** to the question **Do you want to change the configuration settings?**
- Enter the information described in section "[Configure the platform to use](#)".
- Start Panda Importer. Refer to "[Running and stopping the program](#)".

## Manually editing the Panda Importer settings

The `configuration.json` file is in the same folder as Panda Importer and contains its execution parameters.

The first time it is run, the program asks for certain authentication information that it later dumps into the configuration file. Once the installation and execution processes are completed, you'll be able to edit the configuration file in order to fine-tune its parameters.



*Every time you modify the `configuration.json` file, you must stop and start the Panda Importer process so that it applies the changes made to the file. Refer to "[Running and stopping the program](#)".*

The `configuration.json` file follows the JSON syntax.

### Parameters related to log files containing events

The parameters that determine how Panda Importer behaves in order to generate the log files that contain the events logged by Panda SIEMFeeder are:

- **fullPath**: absolute path to the folder the log files are downloaded to.
- **fileSizeLimitInBytes**: maximum allowed size of the log files.



- **directoryMaxSizeInMB:** maximum allowed size of the folder that stores the log files. When the maximum size is reached, 10 percent of the oldest files are deleted.
- **FileSplitFormat:** rotation interval of the log files. The file name contains the year(yyyy), month(MM), day (dd), hour(HH), and minute (mm) when the file was created.
  - **"1h"** or **empty:** yyyyMMdd-HH format. A file is generated every hour.
  - **"1m":** yyyyMMdd-HHmm format. A file is generated every minute.
  - **"5m":** yyyyMMdd-HHmm format. A file is generated every 5 minutes.
  - **"10m":** yyyyMMdd-HHmm format. A file is generated every 10 minutes.
  - **"15m":** yyyyMMdd-HHmm format. A file is generated every 15 minutes.
  - **"30m":** yyyyMMdd-HHmm format. A file is generated every 30 minutes.
- **Channels:** indicates the characteristics of the channel used to download the log files.
- **Type:** storage type used in the channel.
- **Name:** channel name.
- **Configuration:** channel settings (fullPath, fileSplitFormat, fileSizeLimitInBytes, directoryMaxSizeInMB).

## Parameters related to the execution log

All operations executed by Panda Importer are logged to text files stored in the `Log` folder inside the same folder that contains the program.



Refer to "[Appendix 1: Troubleshooting](#)" on page 53 for a description of the errors Panda Importer can generate.

The parameters that determine how Panda Importer behaves in order to generate the log files that log the actions it takes are:

- **LogsPath:** absolute or relative path and file name. The backslash character ("\\") must be escaped. For example ".\\log\\log.txt".
- **LogFileSizeLimitKBytes:** rotates the log file when it reaches a certain size in Kbytes, adding the suffix "-SequenceNumber" to it. For example "log-3.txt".
- **LogRetainedFileCountLimit:** indicates the maximum number of files that Panda Importer stores on the storage device. When this number is reached, Panda Importer deletes the oldest file.
- **Interval:** rotation interval of the log files:
  - **0:** No rotation. The suffix is null. The file name matches the name defined in the **LogsPath** parameter.
  - **1:** the file is rotated every year. The suffix for the name defined in **LogsPath** is `LognameYear(YYYY)`. For example "log2021.txt".
  - **2:** the file is rotated every month. The suffix for the name defined in **LogsPath** is

LognameYearMonth(YYYYMM). For example "log202107.txt"

- **3:** the file is rotated every day. The suffix for the name defined in **LogsPath** is LognameYearMonthDay(YYYYMMDD). For example "log20210722.txt"
- **4:** the file is rotated every hour. The suffix for the name defined in **LogsPath** is LognameYearMonthDayHour(YYYYMMDDhh). For example "log2021072210.txt"
- **5:** the file is rotated every minute. The suffix for the name defined in **LogsPath** is LognameYearMonthDayHourMinute(YYYYMMDDhhmm). For example "log202107221055.txt"

# Chapter 6

## Installing and configuring Panda Importer on Linux systems

Panda Importer is the application responsible for downloading the events logged by Panda SIEMFeeder and Panda SIEMFeeder for Partners from the Azure infrastructure. These events are stored in log files which, depending on the configured settings, are decompressed by Panda Importer and placed in a local or remote folder, or sent to a compatible server (Kafka or Syslog).

### CHAPTER CONTENTS

<b>Installation requirements</b> .....	<b>-42</b>
Required information .....	42
Operating system and required libraries .....	42
Required permissions .....	42
Firewall configuration .....	42
NTP server .....	43
<b>Installation and configuration</b> .....	<b>-43</b>
Download the installation package .....	43
Modify the execution attribute of the files .....	44
<b>Configuration</b> .....	<b>-44</b>
Configure the connection method .....	44
Configure the platform to use .....	45
Configure the log storage and send mode .....	45
Update the configuration.json file .....	45
<b>Configuring Panda Importer as a daemon</b> .....	<b>-45</b>
<b>Configuring multiple instances</b> .....	<b>-46</b>
Multiple instances in command-line mode .....	46
<b>Configuring log storage and forwarding</b> .....	<b>-46</b>
Storing logs in a local or remote folder .....	47
Sending logs to a Kafka server .....	47
Sending logs to a Syslog server .....	47
<b>Copying downloaded logs to multiple locations</b> .....	<b>-48</b>
<b>Running and stopping the program</b> .....	<b>-49</b>
In command-line mode .....	49
In daemon mode .....	49
<b>Changing the settings</b> .....	<b>-50</b>
<b>Manually editing the Panda Importer settings</b> .....	<b>-50</b>

Parameters related to log files containing events .....	50
Parameters related to the execution log .....	51

## Installation requirements

### Required information

For the information required by Panda Importer for its correct operation, refer to “[Licenses and required information](#)” on page 21.

### Operating system and required libraries

The download package contains everything required for Panda Importer to work on all platforms compatible with .NET Core 3.1. Refer to <https://docs.microsoft.com/en-us/dotnet/core/install/linux> for a list of all supported versions and distributions.

### Required permissions

Panda Importer can be run as a command-line program or unattended as a system daemon.

- In daemon mode, the program runs under a user account, but root permissions are required for the administrator to configure it.
- When run as a command-line program, it doesn't require any specific permissions beyond access to the resources it may need; for example, write access to the folder configured to store the downloaded logs.

### Firewall configuration

In order for the Panda Importer computer to be able to download log files from the Azure infrastructure, all intermediate firewalls must allow network traffic with the following characteristics:

- Access to the URL <https://auth.pandasecurity.com>.
- Access to the URL <https://storage.accesscontrolmgr.pandasecurity.com>.
- Access to the URL [sb:// pac100siemfeeder.servicebus.windows.net](sb://pac100siemfeeder.servicebus.windows.net).
- **Communication source:** Panda Importer computer.
- **Communication target:** Azure infrastructure.
- **Connection type:** outbound from the customer's network.
- **Layer 3 (transport) protocol:** TLS 1.2.
- **Layer 4 (application) protocol:** HTTPS (port 443), Amqp (ports 5671 and 5672), Amqp WebSockets (port 443).

## NTP server

To download the logs stored in the Azure infrastructure, an authentication and authorization process must be completed that involves generating a token. This token is issued with an expiration date to improve the security of the entire process, therefore, the clocks of both communication endpoints must be synchronized. For this reason, it is required that the computer that runs Panda Importer have the `ntpd` service (or equivalent) up and running in order to get the time from an NTP server. For more information, refer to <https://www.ntppool.org/en/use.html>.

# Installation and configuration

For more information about the origin of the errors that may occur during the installation process, refer to “[Appendix 1: Troubleshooting](#)” on page 53.

To install and configure Panda Importer, perform the steps below in the listed order:

1. Download and decompress the .GZ file containing the installer: Refer to “[Download the installation package](#)”.
2. (Optional) If needed, modify the execution attribute of the files.
3. Indicate the connection method supported by the IT infrastructure that will host the Panda Importer computer: direct connection or through a corporate proxy. Refer to “[Configure the connection method](#)”.
4. Indicate the platform where your Panda security products reside. Refer to “[Configure the platform to use](#)”.
5. Configure the method to be used to send and store the received logs containing the monitored events. Refer to “[Configure the log storage and send mode](#)”.
6. Update the `configuration.json` file with the new installation settings. Refer to “[Update the configuration.json file](#)”.
7. (optional) Configure Panda Importer to run as a daemon. Refer to “[Configuring Panda Importer as a daemon](#)”.

## Download the installation package

Download the .GZ package of the Linux version of Panda Importer from <https://www.pandasecurity.com/en/support/card?id=950031> and decompress it to a folder on your computer. This package contains the following main files:

- `EventsFeederImporter.Multiplatform.Host`: downloads the log files containing the events that have occurred on the customer's computers, and stores them on the computer hard disk or forwards them to another computer depending on the configuration defined by the administrator. This program can be run as a process from the command line or as a daemon (refer to “[Configuring Panda Importer as a daemon](#)”).
- `EventsFeederImporter.ConfigAssistant.exe`: launches the configuration wizard containing the

parameters required to configure Panda Importer.

- `Configuration.json`: contains the program settings. All personal data is stored obfuscated to prevent security leaks.

Panda Importer can be run multiple times simultaneously on the same computer. Each Panda Importer instance requires a separate configuration file. Refer to "[Configuring multiple instances](#)".

## Modify the execution attribute of the files

For a Linux system to run a program, the execute bit of the file must be turned on. Run the following commands from a command line:

```
$ sudo chmod a+x /#_SiemFeeder_SAMPLEFOLDER#/EventsFeederImporter.Multiplatform.Host
$ sudo chmod a+x /#_SiemFeeder_SAMPLEFOLDER#/EventsFeederImporter.Multiplatform.ConfigAssistant
```

The variable `/#_SiemFeeder_SAMPLEFOLDER#/` is the full path to the folder where the uncompressed package resides.

## Configuration

This section describes the steps you must take to generate the configuration file required for a single Panda Importer instance to run in command-line mode and connect to the Azure infrastructure in order to download logs. All other scenarios are based on this configuration.

To configure Panda Importer, you must run the `EventsFeederImporter.Multiplatform.ConfigAssistant` program and answer "Yes" to the question **Do you want to change the configuration settings? [Yes/No]**. A new configuration file that overrides the existing one is generated and the configuration wizard is launched.

### Configure the connection method

If the computer is behind a proxy server, answer **Y** to the question **Is Event Importer behind a proxy server? [Yes/No]**. You will be prompted to enter the proxy server IP address, as well as the user name and password if the proxy server requires authentication.

The password must be a string of alphanumeric characters, spaces, and symbols, except for: ":", "/", "?", "#", "[", "]", "@", "!", "\$", "&", "(", ")", "\*", "+", ";", "=", " ",

Access through the configured proxy server is only used to connect to the Azure infrastructure assigned to the customer or MSSP. It is not used to connect to other resources such as the file server, the Kafka server, or the Syslog server.

## Configure the platform to use

- Specify the platform to which the Panda Adaptive Defense product purchased by your organization belongs. Choose an option in **Select your platform: [C]urrent, [L]egacy, or [W]G Endpoint Security:**
  - **C (Current):** if the account used belongs to the Aether platform.
  - **L (Legacy):** if the account used belongs to the traditional platform.
  - **W (Watchguard):** this does not apply for Panda Security customers.
- Enter the email address and password of the login account used to access the Panda Adaptive Defense on Aether console. For Panda Adaptive Defense Traditional, use the console default user.
- Enter the Customer ID specified in the welcome email. Once entered, Panda Importer will generate an access token it will use internally to subscribe to the service and download the generated log files.

## Configure the log storage and send mode

For more information about how to choose the method to be used to store and send the downloaded logs, refer to "[Configuring log storage and forwarding](#)".

## Update the configuration.json file

After it finishes running, the configuration wizard updates, with the entered information, the `configuration.json` file located in the same folder. Then, Panda Importer starts downloading the logs stored in the Azure infrastructure.

The `configuration.json` file contains the following data:

- Information about the customer whose logs are downloaded.
- Information about the method selected to send and store the downloaded logs.
- Information about the execution mode (command line or daemon).

# Configuring Panda Importer as a daemon

Panda Importer can run automatically as a process in the background at system startup. In such case, it does not show any messages on screen:

- If you are configuring Panda Importer as described in section "[Configuration](#)", stop the process after the procedure is complete by following these steps:
  - Open a Command Prompt window and run the command `ps ax | grep "EventsFeederImporter.Multiplatform.Host"` to get the process PID.
  - Write down the process PID and run the command `kill -9 #PID#`
  - Go back to the initial window and press `Control + C`.

- If Panda Importer was already configured and is running in command-line mode, press Control + C.
- Edit the `siemfeeder.service` file included in the .GZ package by replacing the line starting with `ExecStart` with the full path to the `EventsFeederImporter.Multiplatform.Host` program.
- Copy the `siemfeeder.service` file to the system directory of the Linux distribution used. The most common paths are:
  - `/lib/systemd/system`
  - `/usr/lib/systemd/system`
- Run the `sudo systemctl enable siemfeeder` command to add the script to the system startup sequence.

## Configuring multiple instances

You must configure multiple instances of Panda Importer in the following cases:

- If the computer that runs the Panda Importer program shows symptoms indicating a lack of resources similar to those described in section “[Hardware sizing recommendations for the Panda Importer computer](#)” on page 26, we recommend that you install one or more additional instances of the program and run them concurrently.
- If you require that a single computer with Panda Importer download logs from more than one customer simultaneously, but you are not using Panda SIEMFeeder for Partners.



To download logs files from multiple customers and centralize all downloads through a single Panda Importer instance, use Panda SIEMFeeder for Partners. Refer to “[Panda SIEMFeeder for Partners architecture](#)” on page 15.

### Multiple instances in command-line mode

- Download the latest version of Panda Importer from <https://www.pandasecurity.com/en/support/card?id=950031> and decompress it to a separate folder for each customer whose logs you want to download.
- Configure each application independently using the steps described in section “[Configuration](#)” to install it in command-line mode.
- Run each application independently.

## Configuring log storage and forwarding

Panda Importer provides several methods to store and forward logs based on the network architecture, the available resources, and the volume of information received from the Azure infrastructure:

- Storing the logs in a local or remote folder.



- Sending the logs to a Kafka server.
- Sending the logs to a Syslog server.

The storage method is configured in the configuration wizard when the following question is shown: **Importer enables you to send received events simultaneously to various channels. Do you want to change the current channel settings? [Yes / No].** Selecting **Y** deletes the existing storage and forwarding settings (if any) and generates new settings.

## Storing logs in a local or remote folder

- First, create the folder where the log files will be stored. This can be a local folder on the computer running Panda Importer or a remote, shared drive/resource.
- If you intend to run multiple instances of Panda Importer, create a separate folder for each instance. Otherwise, some logs might be lost during collection and storage.
- Select **F** when the following message appears: **Select where you want to deliver received events: [F]ile on disk, [K]afka topic/queue, or [S]yslog server.**
- Enter the full folder path for each instance of Panda Importer.
- To finish configuring the storage method, answer **No** to the question **Do you want to configure another delivery channel? [Yes / No].**

## Sending logs to a Kafka server

- Select **K** when the following message appears: **Select where you want to deliver received events: [F]ile on disk, [K]afka topic/queue, or [S]yslog server.**
- Enter the IP address or domain name of the Kafka server and the listening port separated by ":".
- Enter the name of the queue/topic that logs will be sent to on the Kafka server.
- Enter the communication protocol that Panda Importer will use to send logs to the Kafka server:
  - **[N]one:** press **N** to send logs in unencrypted format.
  - **[S]sl:** press **S** to send logs using SSL encryption.
  - **s[A]sssl:** press **A** to send logs using SASL/SSL encryption.
  - **saslplain[T]ext:** press **T** to send logs using SASL/PLAIN encryption.
- Depending on whether the communication protocol chosen encrypts data or not, you will have to indicate the path of the file that contains the certificate issued by the CA configured on the Kafka server.
- To finish configuring the delivery method, answer **No** to the question **Do you want to configure another delivery channel? [Yes / No]?**

## Sending logs to a Syslog server

- Select **S** when the following message appears: **Select where you want to deliver received events: [F]ile on disk, [K]afka topic/queue, or [S]yslog server.**

- Select the format configured on the Syslog server for the received logs: **RFC[5]424** or **RFC[3]164**.
- Enter the IP address or domain name of the Syslog server and the listening port separated by ":",
- Select the transport protocol configured on the Syslog server for the received logs: **[T]cp** or **[U]dp**.



To make sure all log files sent by Panda Importer are received on the Syslog server, we recommended configuring the use of the TCP transport protocol on both ends. Otherwise, in overload situations, the UDP protocol might inadvertently discard logs.

- Select the secure protocol to use to encrypt communications between the Syslog server and Panda Importer. **[N]one** or **Tls1.[2]**.
- Select the end-of-message marker configured on the Syslog server for the received logs: **[C]r**, **[L]f**, **c[R]lf**.



If the transport protocol chosen is UDP, no end-of-line marker is used.

If the transport protocol chosen is TCP or TLS, the Null end-of-line marker is always used.

- If the communication protocol chosen encrypts data, indicate the location of the certificate issued by the CA configured on the Syslog server.
- To finish configuring the delivery method, answer **No** to the question **Do you want to configure another delivery channel? [Yes / No]**.

## Copying downloaded logs to multiple locations

Panda Importer allows logs to be downloaded to multiple locations simultaneously. Each log downloaded this way will be removed from the download queue if at least one of the target locations is correctly updated. Therefore, should errors occur during log collection, the different locations might end up with a different number of logs at the end of the process. To implement the ability to download logs to multiple locations, the 'channels' feature is used. A channel indicates the storage type used by Panda Importer and its settings.

To configure Panda Importer, follow the steps below:

- Install Panda Importer as described in section "[Configuration](#)".
- Stop Panda Importer as described in section "[Running and stopping the program](#)".
- Add a new channel to the existing collection in file `configuration.json`. The `channels` parameter syntax is the following:

```
"Channels": [{ channel 1 parameters} , {channel 2 parameters}, ...]
```

- Each channel indicates the storage type used to store logs and its associated settings.

Below you can find an example of a Panda Importer configuration with two channels: the first channel leaves logs in the Log1 folder, and the second channel leaves them in folder Log2:

```
"Channels": [{
  "Type": "LocalDisk",
  "Name": "LD1",
  "Configuration": {
    "fullPath":
"D:\\\\SIEMFeeder\\\\EventFeederImporter 1.0.3 Pro\\\\Log1",
    "filesSplitFormat": "1m",
    "filesSizeLimitInBytes": 102400,
    "directoryMaxSizeInMb": 1024
  }, {
  "Type": "LocalDisk",
  "Name": "LD2",
  "Configuration": {
    "fullPath":
"D:\\\\SIEMFeeder\\\\EventFeederImporter 1.0.3 Pro\\\\Log2",
    "filesSplitFormat": "1m",
    "filesSizeLimitInBytes": 102400,
    "directoryMaxSizeInMb": 1024
  }
},]
```

## Running and stopping the program

### In command-line mode

- To start Panda Importer, double-click the `EventsFeederImporter.Multiplatform.Host` file or run it from the command line.
- If you are configuring Panda Importer as described in section "[Configuration](#)", to stop the process after the procedure follow these steps:
  - Open a Command Prompt window and run the command `ps ax | grep "EventsFeederImporter.Multiplatform.Host"` to get the process PID.
  - Write down the process PID and run the command `kill -9 #PID#`
  - Go back to the initial window and press `Control + C`.
- If Panda Importer was already configured and is running in command-line mode, press `Control + C` to stop it.

### In daemon mode

- To start Panda Importer, run `sudo service siemfeeder start` from the command line.
- To stop Panda Importer, run `sudo service siemfeeder stop` from the command line.
- To get the running status of Panda Importer, run `systemctl status siemfeeder.service` from the command line.

## Changing the settings

To modify the Panda Importer settings, follow these steps:

- Stop the process if it is running.
  - If Panda Importer is running in command-line mode, press Control + C.
  - If Panda Importer is running in daemon mode, run `sudo service siemfeeder stop` from the command line.
- Run the `EventsFeederImporter.Multiplatform.ConfigAssistant` program from the command line or by double-clicking on it.
- Answer **Y** to the question **Do you want to change the configuration settings? [Yes / No]**
- Complete the configuration wizard steps.
- Start Panda Importer.
  - If Panda Importer was running in command-line mode, double-click the `EventsFeederImporter.Multiplatform.Host` file or run it from the command line.
  - If Panda Importer was running in daemon mode, run `sudo service siemfeeder Start` from the command line.

## Manually editing the Panda Importer settings

The `configuration.json` file is in the same folder as Panda Importer and contains its execution parameters.

The first time it is run, the program asks for certain authentication information that it later dumps into the configuration file. Once the installation and execution processes are completed, you'll be able to edit the configuration file in order to fine-tune its parameters.



Every time you modify the `configuration.json` file, you must stop and start the Panda Importer process so that it applies the changes made to the file. Refer to [“Running and stopping the program”](#).

The `configuration.json` file follows the JSON syntax.

### Parameters related to log files containing events

The parameters that determine how Panda Importer behaves in order to generate the log files that contain the events logged by Panda SIEMFeeder are:

- **fullPath**: absolute path to the folder the log files are downloaded to.
- **fileSizeLimitInBytes**: maximum allowed size of the log files.
- **directoryMaxSizeInMB**: maximum allowed size of the folder that stores the log files. When the

maximum size is reached, 10 percent of the oldest files are deleted.

- **FileSplitFormat:** rotation interval of the log files. The file name contains the year(yyyy), month(MM), day (dd), hour(HH), and minute (mm) when the file was created.
  - **"1h"** or **empty:** yyyyMMdd-HH format. A file is generated every hour.
  - **"1m":** yyyyMMdd-HHmm format. A file is generated every minute.
  - **"5m":** yyyyMMdd-HHmm format. A file is generated every 5 minutes.
  - **"10m":** yyyyMMdd-HHmm format. A file is generated every 10 minutes.
  - **"15m":** yyyyMMdd-HHmm format. A file is generated every 15 minutes.
  - **"30m":** yyyyMMdd-HHmm format. A file is generated every 30 minutes.
- **Channels:** indicates the characteristics of the channel used to download the log files.
- **Type:** storage type used in the channel.
- **Name:** channel name.
- **Configuration:** channel settings (fullPath, fileSplitFormat, fileSizeLimitInBytes, directoryMaxSizeInMB).

## Parameters related to the execution log

All operations executed by Panda Importer are logged to text files stored in the `Log` folder inside the same folder that contains the program.



Refer to "[Appendix 1: Troubleshooting](#)" on page 53 for a description of the errors Panda Importer can generate.

The parameters that determine how Panda Importer behaves in order to generate the log files that log the actions it takes are:

- **LogsPath:** absolute or relative path and file name. The backslash character ("\\") must be escaped. For example ".\\log\\log.txt".
- **LogFileSizeLimitKBytes:** rotates the log file when it reaches a certain size in Kbytes, adding the suffix "-SequenceNumber" to it. For example "log-3.txt".
- **LogRetainedFileCountLimit:** indicates the maximum number of files that Panda Importer stores on the storage device. When this number is reached, Panda Importer deletes the oldest file.
- **Interval:** rotation interval of the log files:
  - **0:** No rotation. The suffix is null. The file name matches the name defined in the **LogsPath** parameter.
  - **1:** the file is rotated every year. The suffix for the name defined in **LogsPath** is `LognameYear(YYYY)`. For example "log2021.txt".
  - **2:** the file is rotated every month. The suffix for the name defined in **LogsPath** is `LognameYearMonth(YYYYMM)`. For example "log202107.txt"

- **3:** the file is rotated every day. The suffix for the name defined in **LogsPath** is `LognameYearMonthDay(YYYYMMDD)`. For example `“log20210722.txt”`
- **4:** the file is rotated every hour. The suffix for the name defined in **LogsPath** is `LognameYearMonthDayHour(YYYYMMDDhh)`. For example `“log2021072210.txt”`
- **5:** the file is rotated every minute. The suffix for the name defined in **LogsPath** is `LognameYearMonthDayHourMinute(YYYYMMDDhhmm)`. For example `“log202107221055.txt”`

# Chapter 7

## Appendix 1: Troubleshooting

Below we describe some of the most commonly encountered issues and their solution:

Symptom/error	Cause	Solution
<code>Error initializing .NET Framework</code>	Panda Importer cannot find .NET Framework 4.6.1 or later on the administrator's computer.	Make sure .NET Framework 4.6.1 is installed. Go to <a href="https://www.microsoft.com/en-us/download/details.aspx?id=49981">https://www.microsoft.com/en-us/download/details.aspx?id=49981</a> to download it.
<code>invalid_redirect_uri</code> <code>unrecognized_client_id</code> <code>unsupported_scope</code>	Customer ID not recognized	Make sure the customer is correctly registered in the Panda SIEMFeeder service.  Make sure the email address used to log in to the Panda Adaptive Defense management console is correctly entered in Panda Importer
<code>unrecognized_client_secret</code> <code>unsupported_grant_type</code> <code>invalid_grant</code>	Customer password not recognized	Make sure the Aether account used to access the Panda SIEMFeeder service has the Full Control role assigned.  Run Panda Importer and answer 'Y' to the question ' <b>Do you want to change the configuration settings?</b> ' Re-enter the password.  Check that the computer on which Panda Importer runs has the time synchronized with NTP or a similar service. Check that Windows Time Service is running.
<code>unauthorized_client</code> <code>unsupported_response_type</code> <code>invalid_scope</code> <code>access_denied</code> <code>invalid_request</code>	The authentication information is correct, but there is a problem downloading data	Contact Panda Security Support department.

Table 7.1: Potential problems and solutions

Symptom/error	Cause	Solution
<code>temporarily_unavailable</code> <code>server_error</code>	The Panda SIEMFeeder service is temporarily unavailable due to technical issues	Run Panda Importer again after some time. Check the email account used to register the service. If the error persists, an email will be sent to the administrator explaining the reasons for the service stop and the available options.

Table 7.1: Potential problems and solutions



# Chapter 8

## Appendix 2: Security Architecture

This chapter deals with the AAA-based (Authentication, Authorization, and Access) security architecture implemented in Panda SIEMFeeder as well as the encryption of all communications between the Panda Importer software and all the other components that make up the solution.

### CHAPTER CONTENTS

<b>AAA security architecture overview</b> .....	<b>-56</b>
Security architecture: Components .....	56
Initial message exchange .....	57
Subsequent message exchange .....	58
<b>Communication characteristics</b> .....	<b>-58</b>
Encrypted communications for downloading log files .....	59

## AAA security architecture overview

### Security architecture: Components

Figure shows the components responsible for authenticating customers and granting them access to the platform resources required to download the log files that contain the information collected from the organization's IT network.

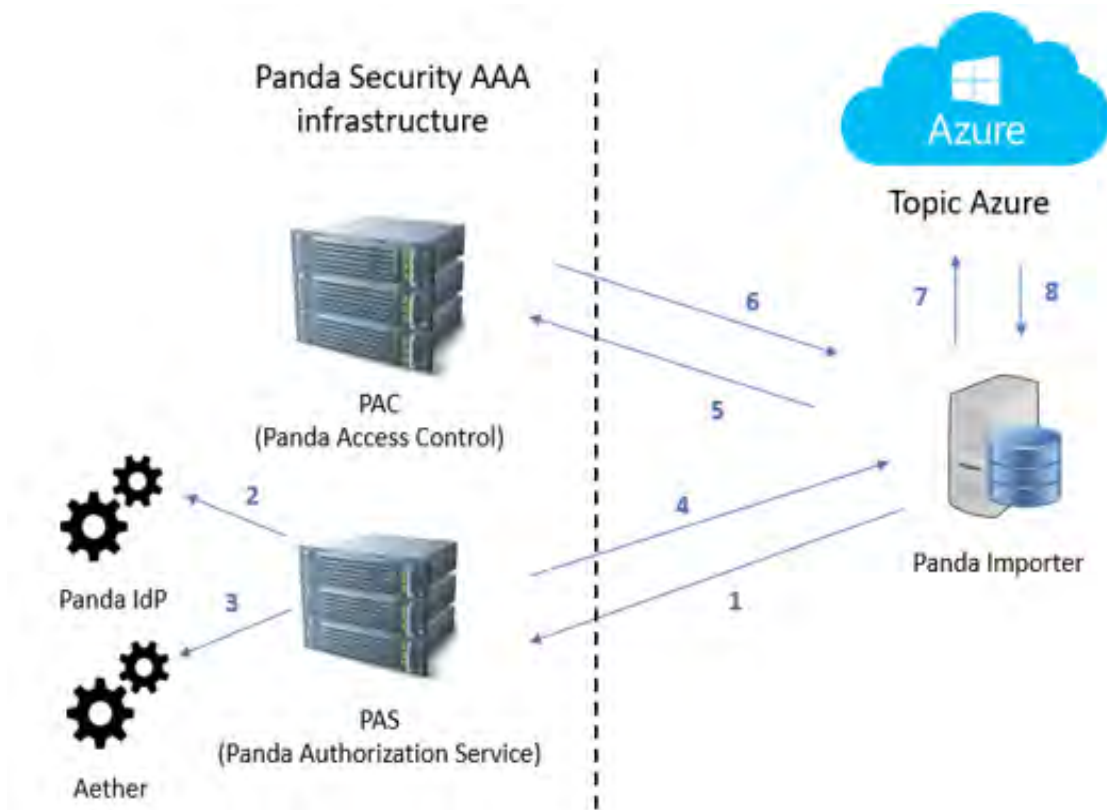


Figure 8.1: AAA security architecture overview

- **Panda Importer:** program provided by Panda and designed to collect the log files stored on the Azure platform.
- **Azure Topic:** a queue-type resource generated on the Azure platform. It stores the log files received from Panda Security with the information collected from the organization's IT network.
- **PAS (Panda Authorization Service):** service that authenticates and authorizes access to the Azure topic. It receives, from Panda Importer, the credentials assigned to the customer when purchasing the service, and returns to it an access token and a refresh token.
- **PAC (Panda Access Control):** service that enables Panda Importer to access the Azure topic provisioned to the customer. It receives the refresh token from Panda Importer and returns a shared access signature (SAS) key.
- **Panda IdP (Identity Provider):** service that authenticates the sent credentials.
- **Aether:** service that authorizes access to Panda SIEMFeeder.

## Initial message exchange

To access the Panda SIEMFeeder service securely, an initial message exchange must take place between the Panda Importer computer and Panda SIEMFeeder. This exchange must take place successfully; otherwise, it won't be possible to access the information published in the Azure topic.

Below is a diagram showing the message flow established the first time that Panda Importer is run (numbered based on 8.1). This message flow must be established every time the user is removed from the system or is unassigned the Full Control role assigned via Aether.

1. **Panda Importer** sends the credentials (email address and password) assigned to the customer.
2. **Authentication Phase:** the PAS service connects to the Panda IdP service to validate the credentials.
3. **Authorization Phase:** the PAS service connects to the Aether service to check whether the customer has access to the Panda SIEMFeeder service

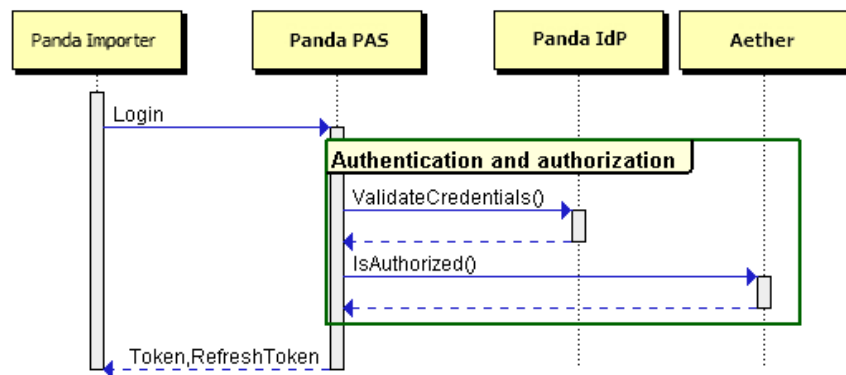


Figure 8.2: Steps 1 to 4 in the initial message exchange

4. The PAS service generates and delivers an access token and a refresh token to Panda Importer .
5. **Panda Importer** sends the refresh token to the PAC service.
6. **Access Phase:** the PAC service generates a shared access signature (SAS) key.
7. **Access to the topic:** Panda Importer accesses the assigned topic using the SAS key.
8. **Panda Importer** receives the logs from the subscribed topic.

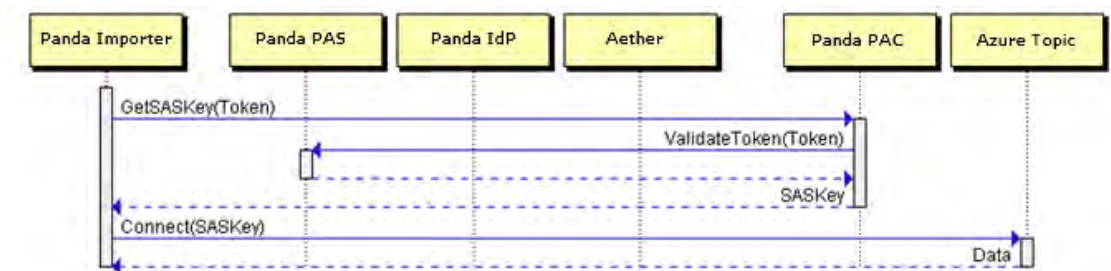


Figure 8.3: Steps 5 to 8 in the initial message exchange

## Subsequent message exchange

Panda Importer uses the refresh token to obtain the SAS key. Both the token and the SAS key have an expiration date and are short lived for security reasons. As soon as the refresh token expires, Panda Importer will generate the following alternative message flow:

1. Panda Importer asks the PAS service for a new refresh token. To do that, it sends the access token that was assigned to it during the above-mentioned initial flow.
2. With the new refresh token, Panda Importer asks the PAC service for a new SAS key.
3. With the new SAS key, Panda Importer connects to the Azure topic and continues collecting log files.

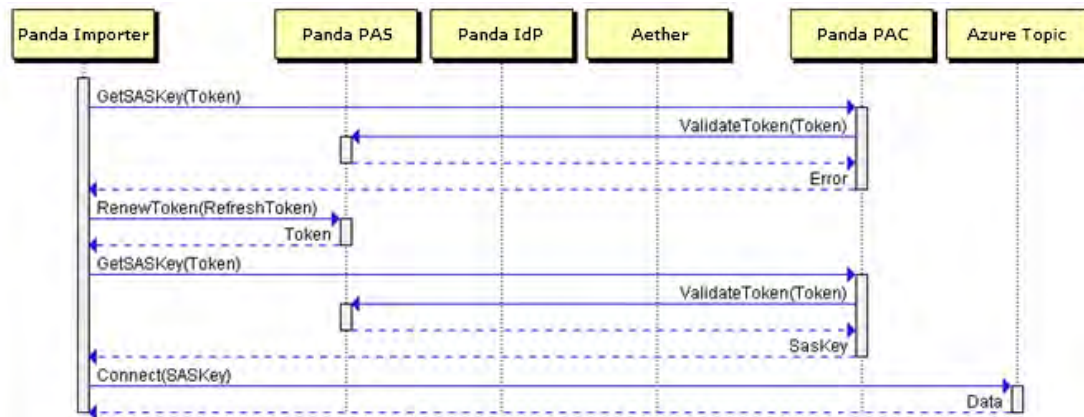


Figure 8.4: Message flow when the refresh token expires

## Communication characteristics

### AAA communication encryption

All communications for requesting and sending tokens are encrypted with HTTPS protocol SSL SHA256 – G3.

### Lifetime of the tokens assigned by Panda SIEMFeeder

- **PAS refresh token:** 14 days
- **PAS access token:** 20 minutes
- **SAS key:** 1 day

Panda Importer uses the refresh token to access the Azure topic. Once the refresh token expires, a new access token will be generated containing the account details entered in the Panda Importer program. In addition to this, a new refresh token will also be generated for Panda Importer to continue accessing the Azure topic.

Even if the account used when configuring the service is no longer available or doesn't have the Full Control role assigned to it, the customer will be able to continue accessing the service provided the refresh token has not expired (maximum lifetime: 14 days). If the refresh token expires, it won't be possible to generate a new refresh token and access will be denied.

### **Encrypted communications for downloading log files**

All communications established for downloading log files are encrypted with the TLS/SSL and SASL protocols





